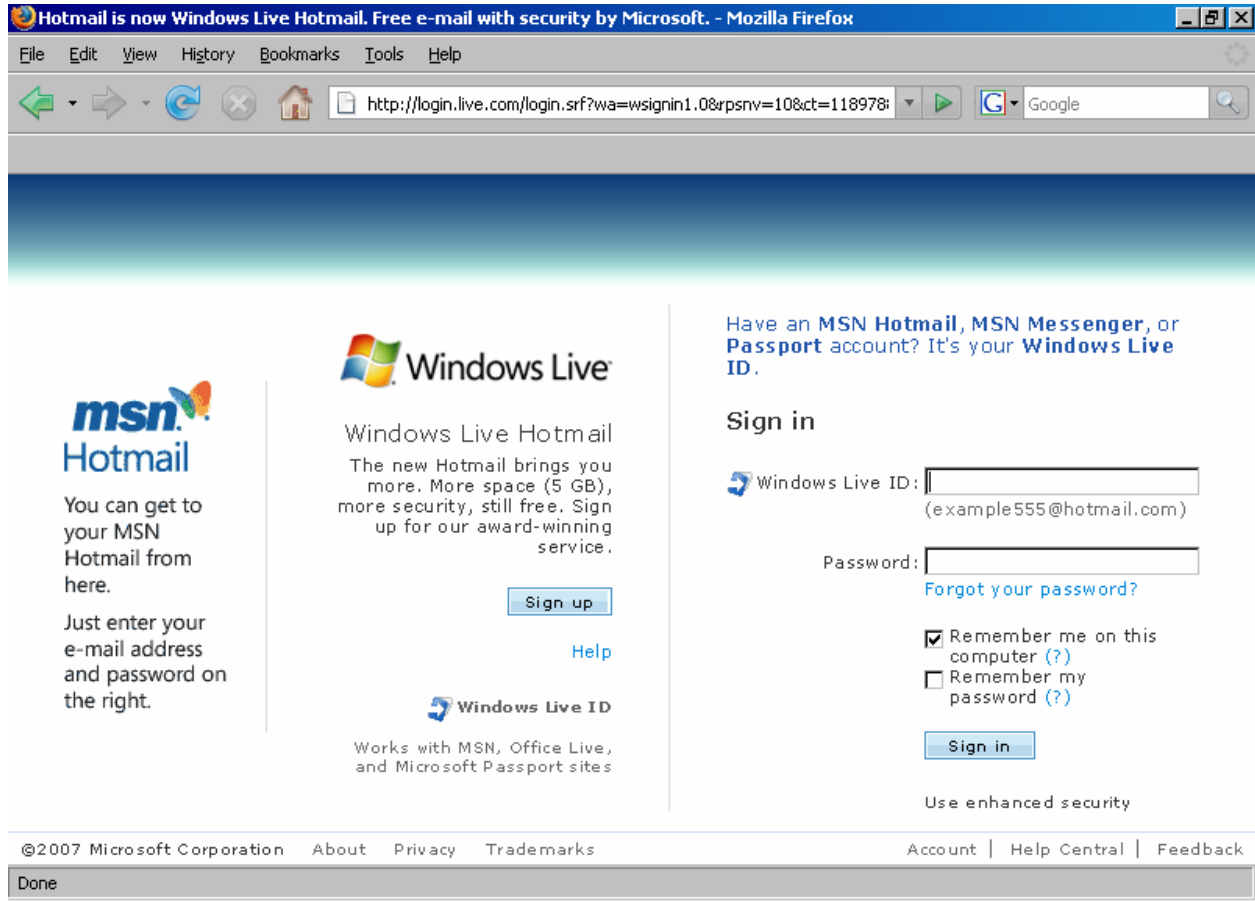


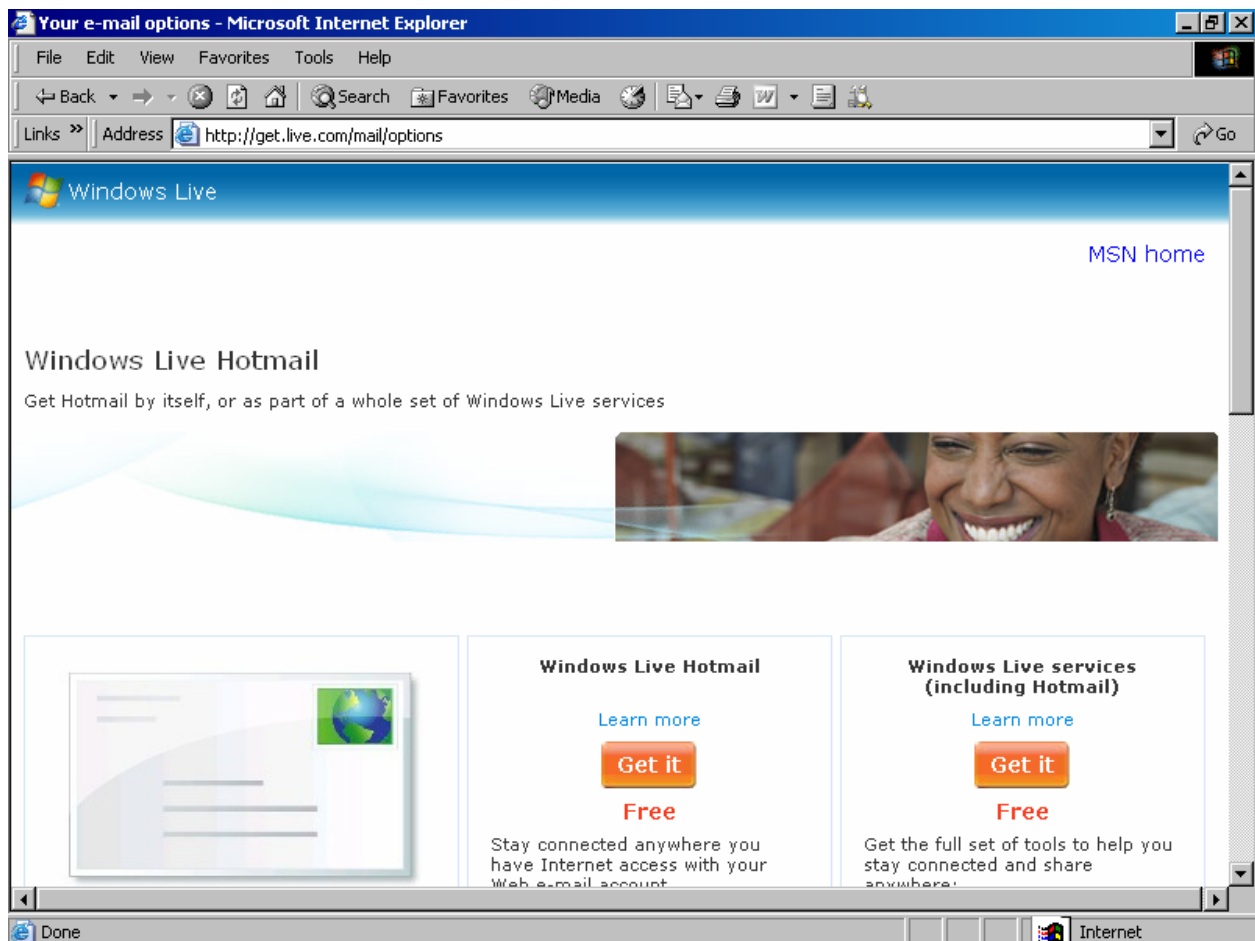
Creating Your Own E-mail account (Hotmail)

Step one: Open the internet explorer and type the address: <http://www.hotmail.com> . You should arrive to a screen that looks like this:



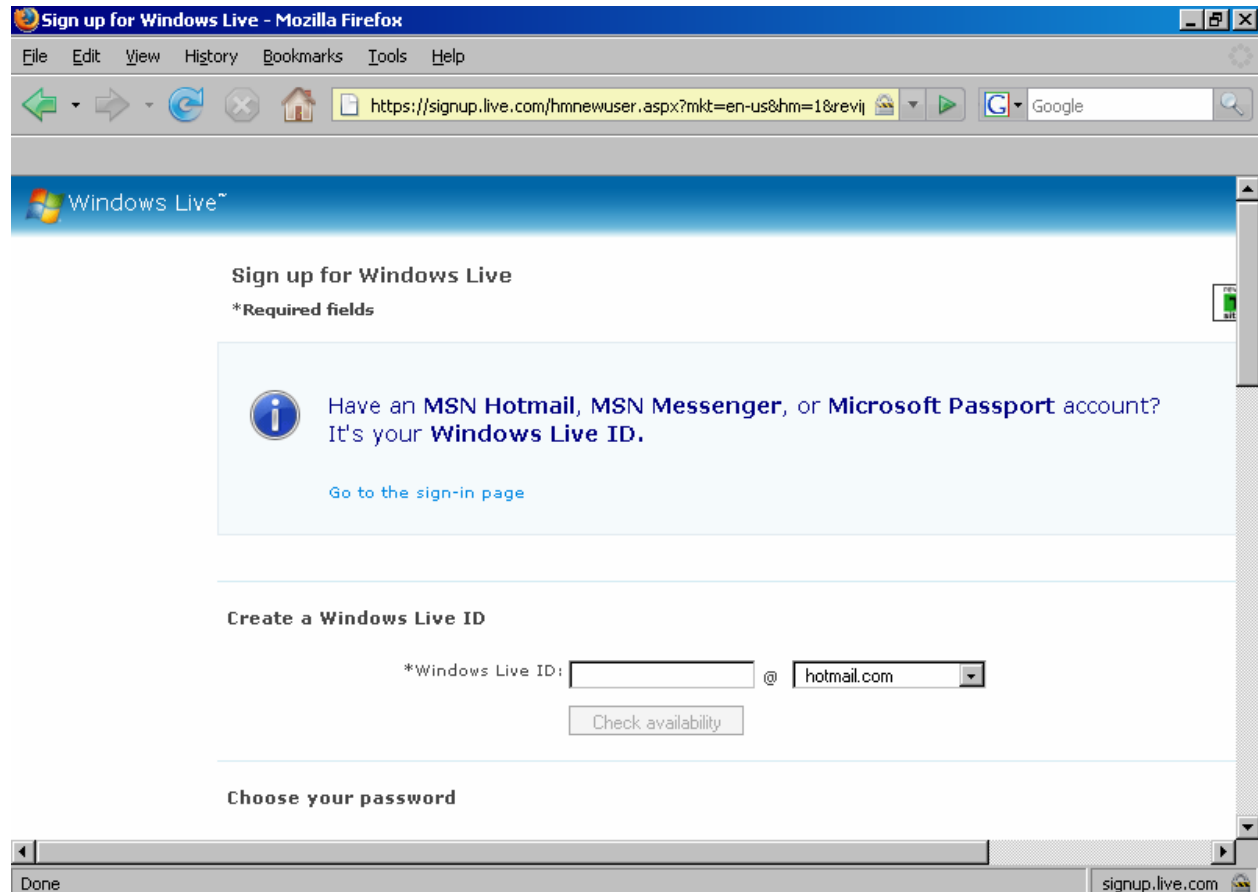
Step Two: Click on the light blue button in the center of the screen that says, "Sign up".

The next page should look like this:



Step Three: Click on the orange button in the middle of the screen that says, “Get it Free”.

You'll then come to a page that looks like this:

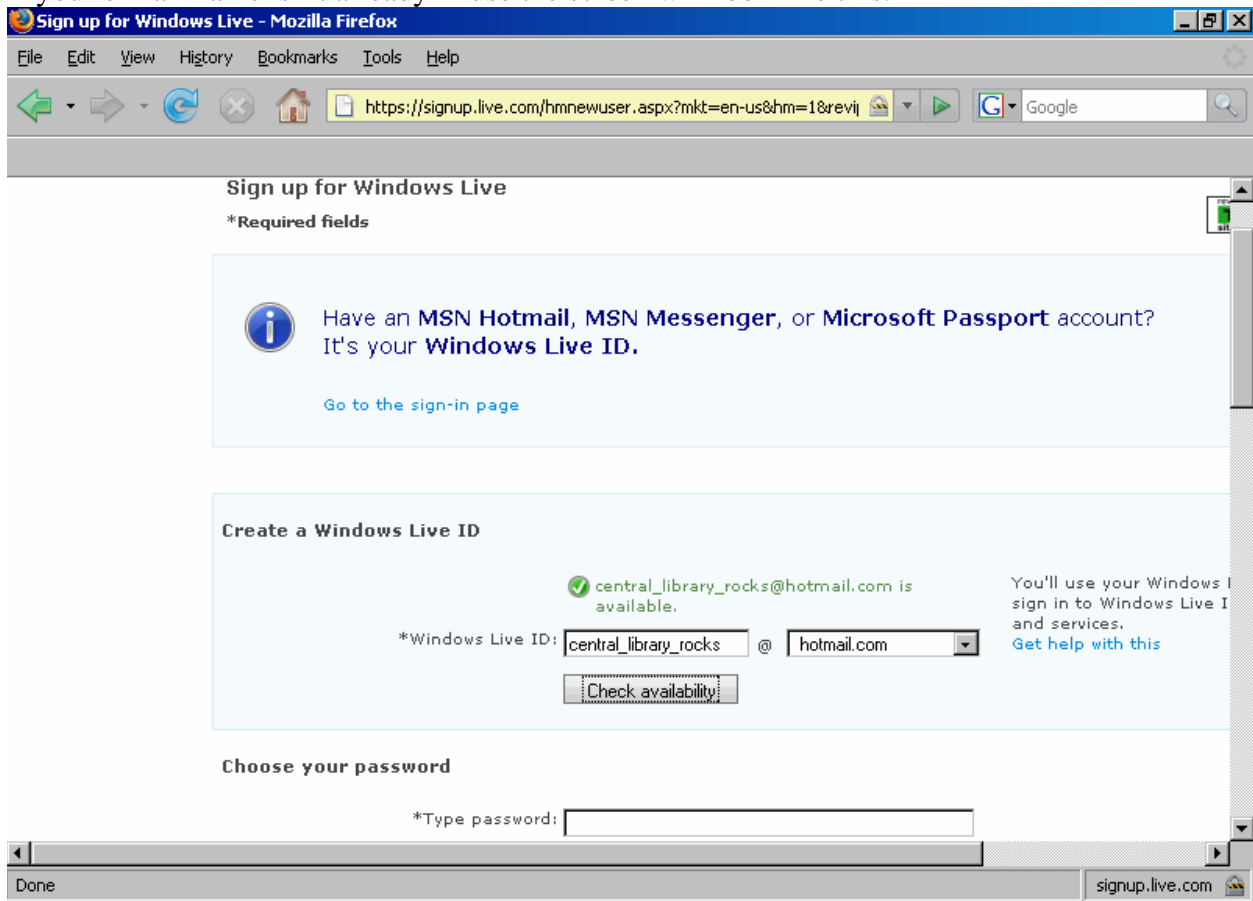


The screenshot shows a Mozilla Firefox browser window titled "Sign up for Windows Live - Mozilla Firefox". The address bar displays the URL "https://signup.live.com/hmnewuser.aspx?mkt=en-us&hm=1&revij". The page content includes a "Sign up for Windows Live" heading, a "*Required fields" section, an information box with an "i" icon stating "Have an MSN Hotmail, MSN Messenger, or Microsoft Passport account? It's your Windows Live ID." and a link "Go to the sign-in page". Below this is the "Create a Windows Live ID" section, which contains a text input field for the Windows Live ID, an "@ hotmail.com" dropdown menu, and a "Check availability" button. The "Choose your password" section is partially visible at the bottom.

Step Four: In the box next to *Windows Live ID:

You will type what you want to be your e-mail name. This can be your first and last name or a nickname or anything else. Once you've typed it in the box click on the gray button that says, "Check Availability".

If your e-mail name isn't already in use the screen will look like this:



If your name is already taken this screen will appear, don't panic.



Try typing some numbers after your name until your screen says your name was available.

Step Five: Now you must create a secret word so that only you can access your e-mail account. It has to be at least six letters long and can include numbers and capitalized letters.

The password strength means that your word is hard for someone to guess. The way you can increase the strength is by using a number or capital letter. A combination of these two things in your password creates the maximum strength.

Example:

<u>Password:</u>	<u>Strength:</u>
librariesrock	weak
LibrariesRock	medium
LibrariesRockx10	strong

*****REMEMBER:** Passwords are case sensitive, meaning if you use a capital letter in your password then you must always remember to capitalize the letter when entering your password.

Sign up for Windows Live - Mozilla Firefox

File Edit View History Bookmarks Tools Help

https://signup.live.com/hmnewuser.aspx?mkt=en-us&hm=1&revij

*Windows Live ID: @

Choose your password

*Type password:
Six-character minimum; case sensitive

Password strength: **Strong**

*Retype password:

Strong passwords contain characters, do not include words or names, and contain three of these character types: uppercase letters, lowercase letters, numbers, or symbols. [Get help with this](#)

Enter password reset information

Alternate e-mail:
This must be different from your Windows Live ID

*Question:

*Secret answer:
Five-character minimum; not case sensitive

Done signin.live.com

Step Six: Now we have to make a secret question and answer. This in case you forget your password, then hotmail will be able to know it's you and give it to you. Don't worry if you don't have another e-mail address; just leave the "Alternative e-mail" box blank.

Select one of the questions and type in an answer that only you'll know and remember.

*Type password: [password field]
Six-character minimum; case sensitive

Password strength: **Strong**

*Retype password: [password field]

Enter password reset information

Alternate e-mail: [text field]
This must be different from your Windows Live ID

*Question: [dropdown menu]
Select one
Mother's birthplace
Best childhood friend
Name of first pet
Favorite teacher
Favorite historical person
Grandfather's occupation

*Secret answer: [text field]

We can use your alternate address or your secret answer to verify your identity if you forget your password. [Get help with this](#)

Your information

*First name: [text field]

*Last name: [text field]

*Gender: Male Female

Your screen should now look something like this:

*Type password: [password field]
Six-character minimum; case sensitive

Password strength: **Strong**

*Retype password: [password field]

Enter password reset information

Alternate e-mail: [text field]
This must be different from your Windows Live ID

*Question: [dropdown menu]
Grandfather's occupation

*Secret answer: [text field]
Librarian
Five-character minimum; not case sensitive

We can use your alternate address or your secret answer to verify your identity if you forget your password. [Get help with this](#)

Your information

*First name: [text field]

*Last name: [text field]

*Gender: Male Female

Step Seven: Now scroll down the page and you'll see you need to enter in some personal information. This is all pretty self explanatory, if you're uncomfortable using your real information you can always make something up.

Sign up for Windows Live - Mozilla Firefox

File Edit View History Bookmarks Tools Help

https://signup.live.com/hmnewuser.aspx?mkt=en-us&hm=1&revij

Google

*Secret answer: Librarian
Five-character minimum; not case sensitive

Your information

*First name: J. Erik

*Last name: Jonsson

*Gender: Male Female

*Birth year: 1945
Example: 1999

*Country/Region: United States

*State: Texas

*ZIP code: 75201

This information helps us personalize your Windows experience.
[Get help with this](#)

Type the characters you see in this picture

Done

signup.live.com

Scroll down further and your screen should look something like this:

Sign up for Windows Live - Mozilla Firefox


File Edit View History Bookmarks Tools Help

https://signup.live.com/hmnewuser.aspx?mkt=en-us&hm=1&revlj Google

*State: Texas

*ZIP code: 75201

Type the characters you see in this picture

Picture:  8 characters

*Type characters:

Review and accept the agreements

Clicking **I accept** means that you agree to the [Windows Live Service Agreement](#) and [Privacy Statement](#).

© 2007 Microsoft | Privacy | Legal Help Central | Account | Feedback

http://g.msn.com/2privacy/enus signup.live.com

Just type the letters and numbers shown in the picture box into the “*Type characters” box. Make sure you type the letters exactly the same as the picture –ie, upper case for upper case and lower case for lower case.

Once you have typed in the “*Type characters” box click the light blue button that says, “I accept”.

Sign up for Windows Live - Mozilla Firefox


File Edit View History Bookmarks Tools Help

https://signup.live.com/hmnewuser.aspx?mkt=en-us&hm=1&revij Google

*State: Texas

*ZIP code: 75201

Type the characters you see in this picture

Picture:  This helps us prevent our programs from creating accounts and sending spam. [Get help with this](#)

8 characters

*Type characters: H6U2RWDX

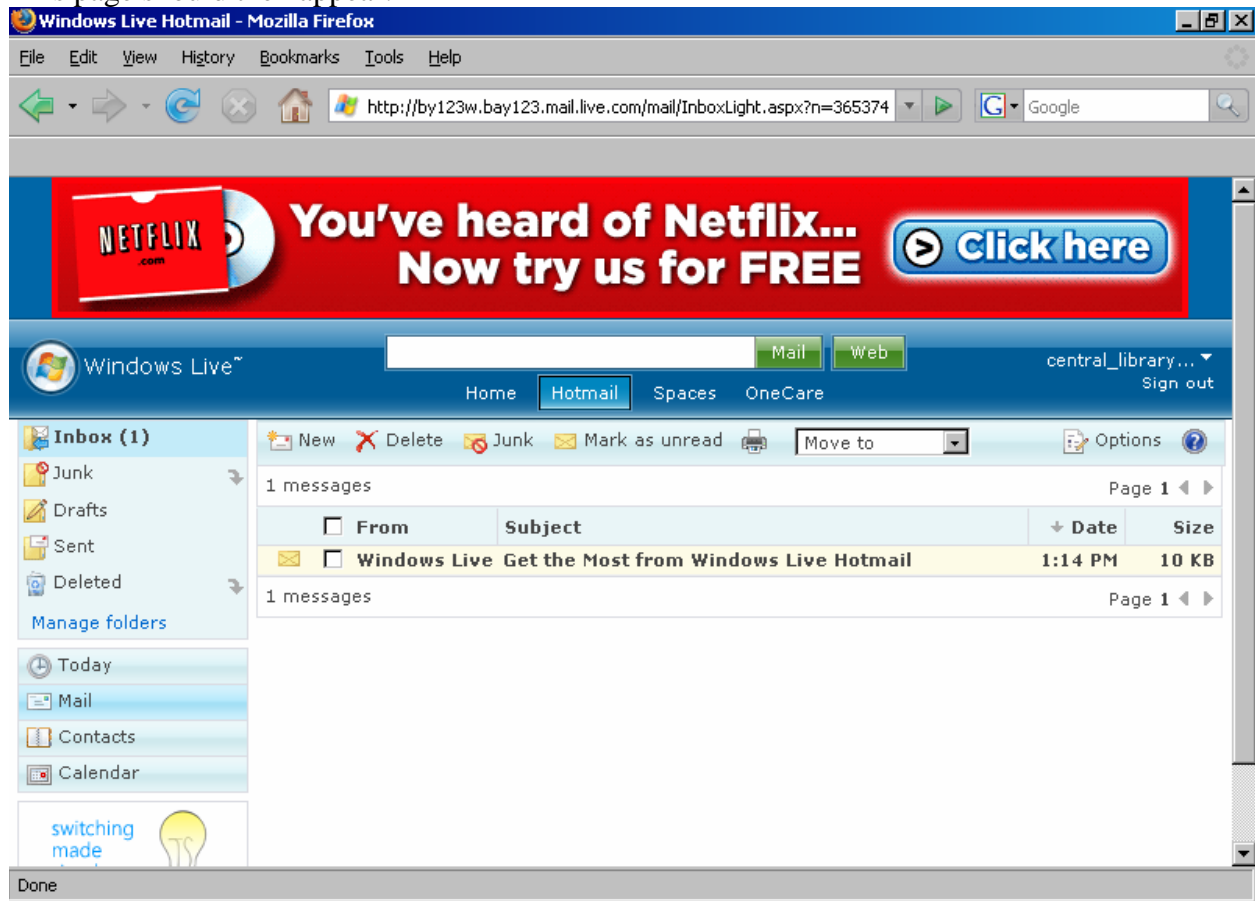
Review and accept the agreements

Clicking **I accept** means that you agree to the [Windows Live Service Agreement](#) and [Privacy Statement](#).

I accept Cancel

© 2007 Microsoft | Privacy | Legal Help Central | Account | Feedback

This page should then appear:



Congratulations you have successfully created your own e-mail account!!