

SKILLMAN SOUTHWESTERN BRANCH LIBRARY

Site & Location Plans

This branch is a neutral red brick building, and its signage is small and difficult to read. It is a symmetrical building sited in a diagonal relationship to the corner.



View of the entrance



View of the parking lot

FAST FACTS

ADDRESS:

5707 Skillman Street

PHONE/FAX:

214-670-6078, fx 670-6148

COUNCIL DISTRICT:

Thirteen

CURRENT FACILITY:

Opened in 1996; 12,205 GSF

ARCHITECT:

Hatfield & Holcomb/DPW&T

'98/'99 MATERIALS:

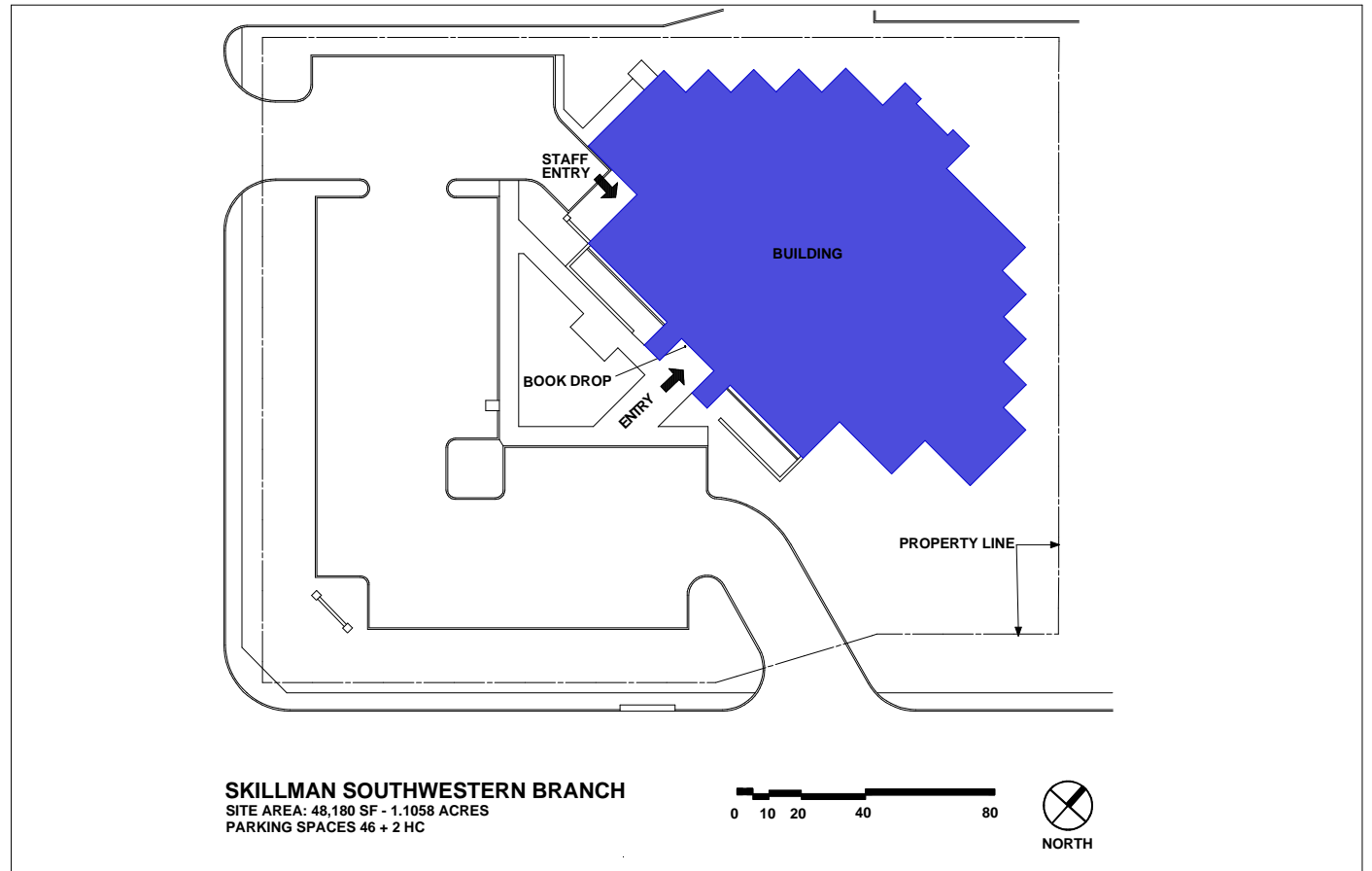
351,808 materials used

COLLECTION SIZE:

59,756



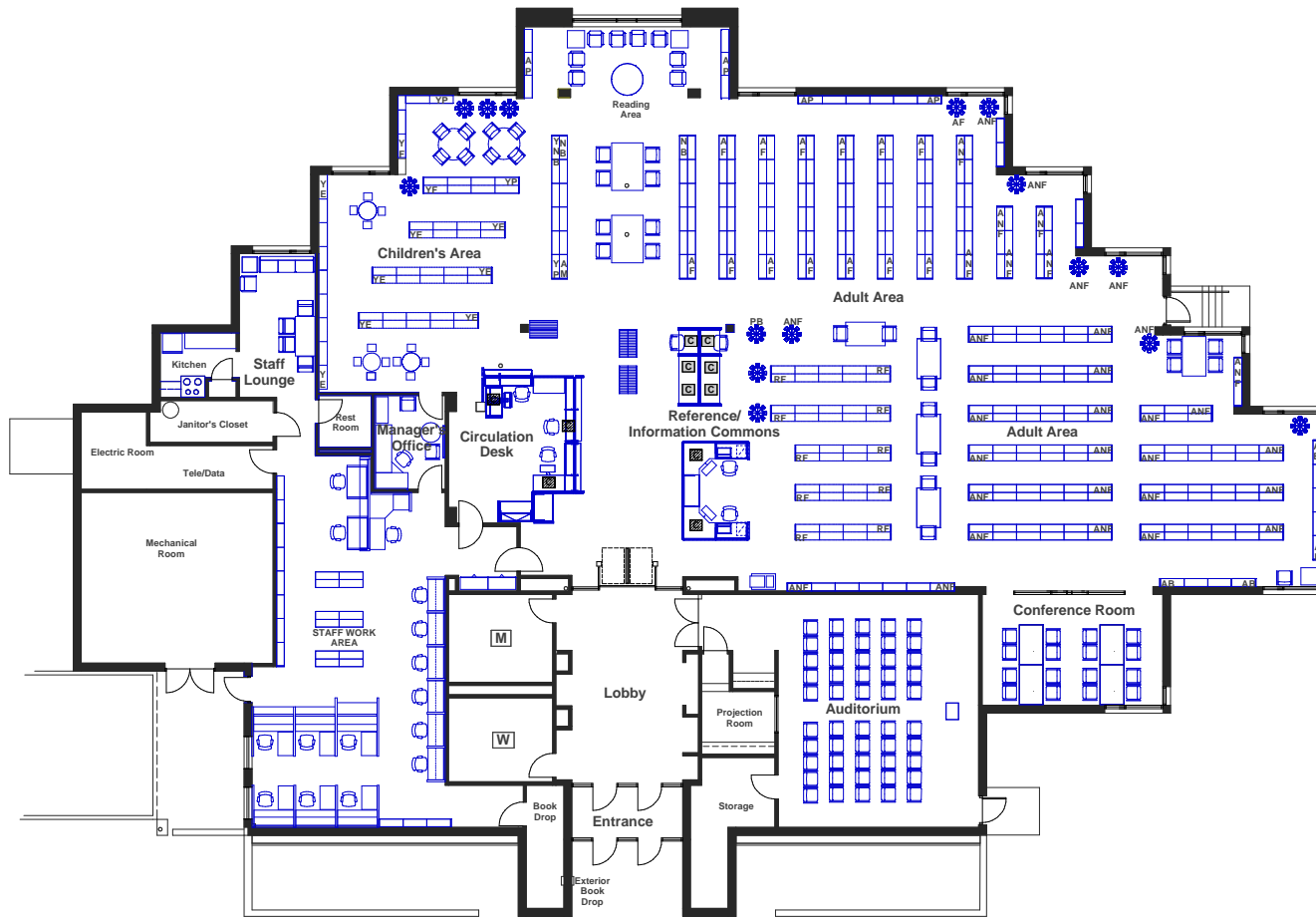
Skillman Southwestern Service Area



SKILLMAN SOUTHWESTERN

SKILLMAN
SOUTHWESTERN
BRANCH LIBRARY

Existing Floor Plan



LEGEND

- HIGH SHELVING (5 TO 7 SHELVES)
- LOW SHELVING (3 OR 4 SHELVES)
- DISPLAY SPINNERS (5 TO 7 SHELVES)
- BOOK BIN
- COMPUTER WORKSTATION - PUBLIC
- COMPUTER WORKSTATION - STAFF
- MICROFORM WORKSTATION
- PHOTOCOPIER
- DISPLAY TABLE
- ATLAS TABLE
- CASH REGISTER
- PRINTER
- WOMEN'S ROOM
- MEN'S ROOM

CHILDREN'S COLLECTION SHELVING

- YE Youth Easy Books & Picture Books
- YF Youth Fiction
- YNF Youth Non-fiction
- YB Youth Biography
- YAF Young-Adult Fiction (Sci-Fi, Mystery)
- YPB Youth Paperbacks
- YP Youth Periodicals
- YM Youth Media
- YNB Youth New Books
- YH Youth Holiday Books

ADULT COLLECTION SHELVING

- AF Adult Fiction (Sci-Fi, Mystery)
- ANF Adult Non-Fiction
- AB Adult Biography
- AP Adult Periodicals
- AS Adult Special Collection
- AM Adult Media
- LP Large Print
- SP Spanish Language
- PB Paperbacks
- NB New Books

OTHER SHELVING

- RF Reference Collection
- STF Staff Shelving
- OS Over-sized shelving

SKILLMAN SOUTHWESTERN BRANCH LIBRARY

0 12 4 8 16



SKILLMAN SOUTHWESTERN BRANCH LIBRARY

Building Infrastructure: Assessments & Recommendations

ASSESSMENTS

SITE/LANDSCAPE

On the north side of the building there is a depressed area in the grass, under a downspout, that may be allowing water under the foundation.

STRUCTURE

No structural deficiencies were observed.

ROOF & INSULATION

The built-up roofing appears to be in good condition. Water leaks have been a problem along the clerestory area. This may be due to improper flashing at the brick sill line or from the clerestory windows.

EXTERIOR WALLS

The exterior brick is generally in good condition. East of the main entry above a window opening several brick mortar joints have been improperly patched with a black sealant. This may have been in response to bending in the steel lintel.

EXTERIOR DOORS & WINDOWS

The existing storefront system is in good condition. East clerestory windows may be a source of water penetration.

INTERIOR FINISHES

Interior finishes are in good condition.

ACCESSIBILITY

Appears compliant.

MECHANICAL AND ELECTRICAL SYSTEMS

Since Skillman Southwestern branch library was completed in 1996 and no operational or maintenance problems have been reported, an assessment is not needed at this time.

RECOMMENDATIONS

SITE/LANDSCAPE

Minor regrading will correct the problem.

STRUCTURE

No action required.

ROOF & INSULATION

Investigate cause of water leaks and repair.

EXTERIOR WALLS

Remove sealant from affected brick mortar joints and repoint. Refer to structural assessment of steel lintel.

EXTERIOR DOORS & WINDOWS

Investigate cause of water leaks and repair.

INTERIOR FINISHES

Remove and replace water stained ceiling tiles.

ACCESSIBILITY

Verify kitchen cabinet at sink complies with ADA accessibility criteria

MECHANICAL AND ELECTRICAL SYSTEMS

Since Skillman Southwestern branch library was completed in 1996 and no operational or maintenance problems have been reported, an assessment is not needed at this time.

**SKILLMAN
SOUTHWESTERN
BRANCH LIBRARY**
Planning and Design
Assessments
& Recommendations

ACTION PLAN

One of the newest branches, this 12,000 SF library is outpaced by user demand and population growth. Its site does not allow for expansion of the library or parking to meet these demands. Loop 12, which is a very heavily travelled road in the city, splits its service area in half.

MAINTAIN
the library and
reduce the service area to
the Northwest Highway

1999 POPULATION: 50,444
2009 POPULATION: 54,990
(slightly reduce
service boundaries)

**PROJECTED
OPERATING EXPENSE**
Skillman Southwestern Branch:
\$368,226



View of the circulation desk



View of the reference desk and reading area

ASSESSMENTS

PARKING

- The parking is inadequate at peak times.
- The parking lot is in good condition.

ENTRANCE

- The entrance is prominent and imposing.

CIRCULATION DESK

- The placement of the desk conflicts with entry/exit traffic.

AUDITORIUM

- The auditorium is adequately sized.

DISPLAYS

- The displays are limited.

ADULT AREA

- The Adult periodicals area is very successful.

CHILDREN'S AREA

- The children's area is ample and easily monitored.

STAFF AREA

- The staff areas and the manager's office lack views to the public areas and are generally unable to support the provision of services.

GROUP STUDY/CONFERENCE

- The conference room is difficult to monitor.

SERVICE DESKS

- The service desks are located in close proximity to the entrance, which causes conflicts with the entry/exit traffic.

FURNITURE

- The furnishings are in good condition.

BUILDING EXTERIOR

- The "Civic image" is marked by the use of brick. The signage is small and difficult to read.

RECOMMENDATIONS

PARKING

- Review parking situation in coming years when the lot needs to be replaced.

ENTRANCE

- Consider well placed shade tree plantings to soften facade.

CIRCULATION DESK

- Consider redesign of circulation desk.

AUDITORIUM

-

DISPLAYS

- Create new interactive displays.

ADULT AREA

- No action required.

CHILDREN'S AREA

- No action required.

STAFF AREA

- Consider relocating the manager's office and opening up views into the public area and circ desk area.

GROUP STUDY/CONFERENCE

- Consider adding well placed security/monitoring cameras.

SERVICE DESKS

- Redesign service desks to improve patron circulation flow.

FURNITURE

- No action required.

BUILDING EXTERIOR

- Replace signage with larger graphics in the future.